



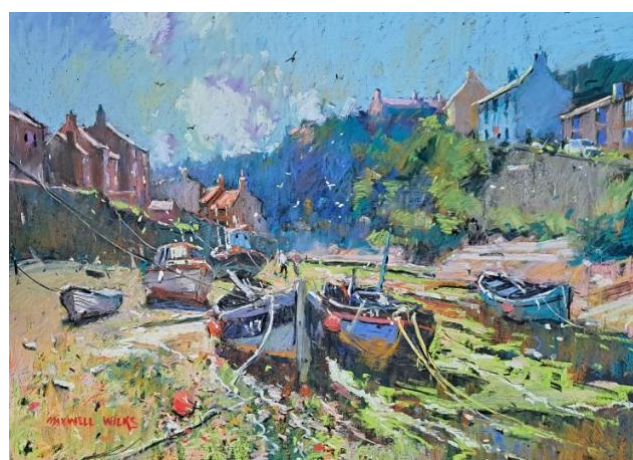
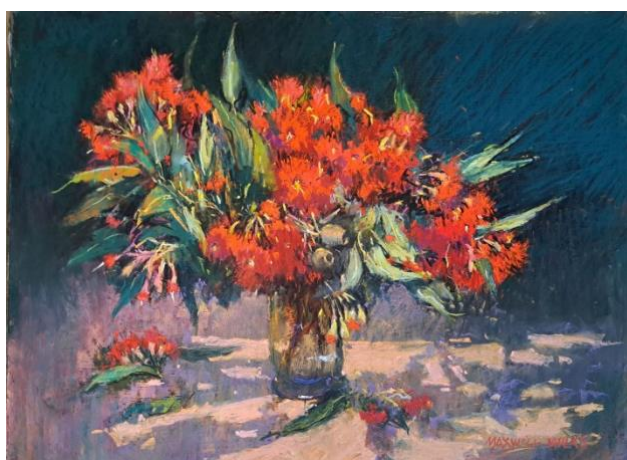
# The Pastel Society of Victoria, Australia

proudly presents

## Maxwell Wilks

for a 2-Day Pastel Workshop on **13 & 14 September 2025**

### Dynamic Still Life & Landscapes



When	Saturday 13 September & Sunday 14 September 2025 9.30 am – 4.30 pm
Where	<b>FERNTREE GULLY COMMUNITY ARTS CENTRE</b>  <b>1010 Burwood Highway, Ferntree Gully VIC 3156</b>
Tutor	Maxwell Wilks was born in Melbourne and worked in the Graphic Arts Industry before studying drawing at the National Gallery School. He also studied Commercial Design at the Royal Melbourne Institute of Technology and has painted full time since 1982 working in oil and pastel. He has had 47 one-man exhibitions in Melbourne, Adelaide and Sydney and Brisbane. For some years he was a council Member of the Victorian Artists Society in Melbourne and was elected a Fellow of the Society and was also Chairman of the Twenty Melbourne Painters Society for seven years. Maxwell taught at the Victorian Artists Society for 16 years taking two classes a week teaching oil painting from life, and currently teaches oil painting at the University of Southern Queensland for two weeks each January. He has also conducted tours for painters to the U.K. and Europe. He is represented in the following publications - Modern Oil Impressionist by Ron Ranson, the Australian Impressionist and Realist Artists compiled by Tom Roberts and the Artist and Galleries of Australia and New Zealand by Max Germain. Maxwell has chosen to follow the representational style of painting because of his strong emotional response to the effects of light, color, atmosphere and form. In the tradition of Australian Landscape Artists, he usually paints directly from his subject and consequently his paintings have a fresh and immediate quality.

<b>Workshop</b>	<p><b>Day 1</b> Max will give a demonstration of Still Life painting using flowers and various objects. Students will then choose their own still life to paint, with Max bringing in subject matter for them to work from. Throughout the day, he will offer individual assistance as students work, and the day will conclude with a group discussion about their progress.</p> <p><b>Day 2</b> Max will focus on Landscape painting, demonstrating techniques and discussing important aspects such as understanding colour. He will provide reference materials for each student to paint their own landscape, offering help and guidance as needed. The day will end with a final discussion of the students' work.</p> <p>Max is a dynamic and engaging presenter with a great sense of humour, making his workshops both informative and enjoyable. His individual style stands out, characterised by unique mark-making techniques and a vibrant use of colour. This approach gives his artwork a distinctive, energetic feel that inspires creativity in his students, encouraging them to explore their own artistic expression.</p>
<b>Cost</b>	<p>The fee for PSVA <b>Members</b> is <b>\$220</b> and for <b>Non-members</b> is <b>\$250</b> for the two-day workshop</p> <p><b>Payment to be made via the Pastel Society of Victoria, Australia's <a href="https://vicpastel.com.au/workshops/">Workshops webpage</a> at <a href="https://vicpastel.com.au/workshops/">https://vicpastel.com.au/workshops/</a></b></p>

<b>To Book</b>	<p><b>Booking is a 2-Step process.</b> Your place in this workshop will only be secured once both the Registration Form &amp; online Payment have been made.</p> <p>Step 1. Register : Go to our <a href="#">Workshops webpage</a> &amp; fill out the <a href="#">online Registration Form</a> &amp; Submit the Form.</p> <p>Step 2. Pay Online : Go to our <a href="#">Workshops webpage</a> &amp; proceed with the online payment.</p> <p>It is expected that this will be a very popular workshop limited to only 14 participants, so to avoid disappointed it is recommended that you book in early.</p> <p><i>When enrolling in a PSVA Workshop we require full payment. Please note that \$50.00 of the Workshop fee is non-refundable. The balance of the fee will be refunded if you cancel at least 7 days prior to the Workshop, but only if your place is filled. The Workshop Coordinator, in consultation with the President and/or Treasurer, has the discretion to alter the above Policy should extenuating circumstances apply.</i></p>
<b>Further Information</b>	<p>A material list will be provided to registered participants closer to the date.</p> <p>There are table easels available, you are welcome to bring a floor easel if you prefer</p> <p>Tables will be available</p>
<b>Morning tea &amp; BYO Lunch</b>	<p>Morning tea &amp; tea and coffee will be provided.</p> <p>Please let our Workshop Coordinator if you have dietary requirements. If you require special milks ie. soy, almond etc., please bring them with you</p> <p>Lunch is BYO</p>

<b>Contact</b>	<p>Workshop Coordinator   <b>Kerrie Carter</b></p> <p>Mobile 0477 696 076</p> <p>Email <a href="mailto:workshop@vicpastel.com.au">workshop@vicpastel.com.au</a></p>
----------------	---



Visit our website at [vicpastel.com.au](http://vicpastel.com.au) to see further information about the

## *The Pastel Society of Victoria, Australia*

